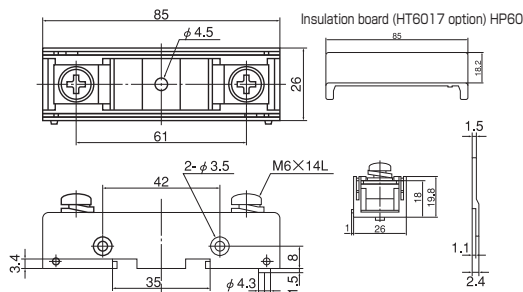
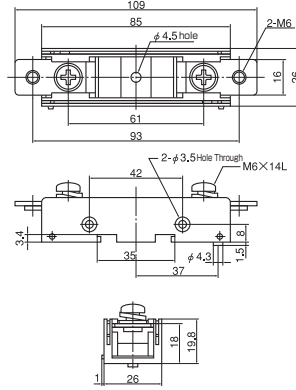


Specifications / Dimensions

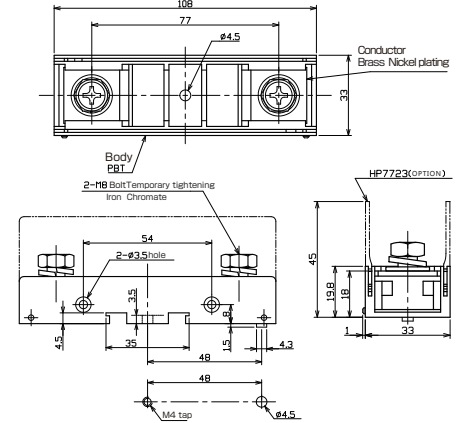
HT6017



HT6017T2



HT7723



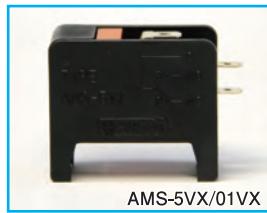
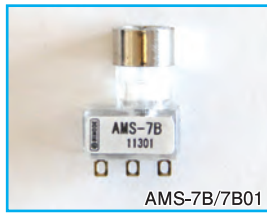
● Specifications

Rated voltage	700V(HT6017T2:660V)	Applicable fuses	Our product 600FH-20 to 55*2 600GH-16 to 100*2
Rated amperage	75A*1	Material	PBT
Applicable wires	Up to 22mm ² (M6)	Option	Dashboard HP60 (one can be installed on each side.)
Installation	DIN rails and direct installation		
Installing hole size			

Rated voltage	800V	Applicable fuses	Our product 660GH-125 to 200 750GH-125 to 200*2
Rated amperage	100A*1	Material	PBT
Applicable wires	Up to 38mm ² (M8)		
Installation	DIN rails and direct installation		

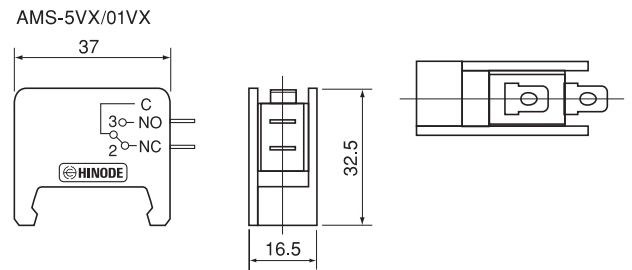
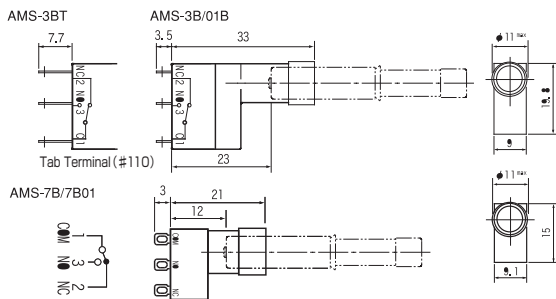
*1 Can be left continuously turned on for long durations.
*2 Use at voltage and current values lower than rated voltage and rated current of fuse holder.

MICROSWITCHES



Specifications / Dimensions For GH & GH Series

For SPF Series



● Specifications

Model	Rated Voltage (V)	Resistive Load (A)	Switch Model
AMS-3B Standard Model	AC250	3	Omron SS-5GL
	DC30	4	
AMS-3BT Tab Terminal	AC250	3	Omron SS-5GLT
	DC30	4	
AMS-01B Very Low-Current Model	AC125	0.1	Omron SS-01GL
	DC30	0.1	
AMS-7 B Standard Model	AC125	3	Omron D2F-D3
	DC30	2	
AMS-7B01 Very Low-Current Model	DC30	0.1	Omron D2F-01-03
	DC5	0.1	

Model	Rated Voltage (V)	Resistive Load (A)	Switch Model
AMS-5VX Standard Model	AC250	5	Omron VX-5-1A3
	DC30	5	
	DC125	0.4	
AMS-01VX Very Low-Current Model	AC250	0.1	Omron VX-01-1A3
	DC8	0.1	
	DC30	.0 1	

Instructions for Micro-switch installation

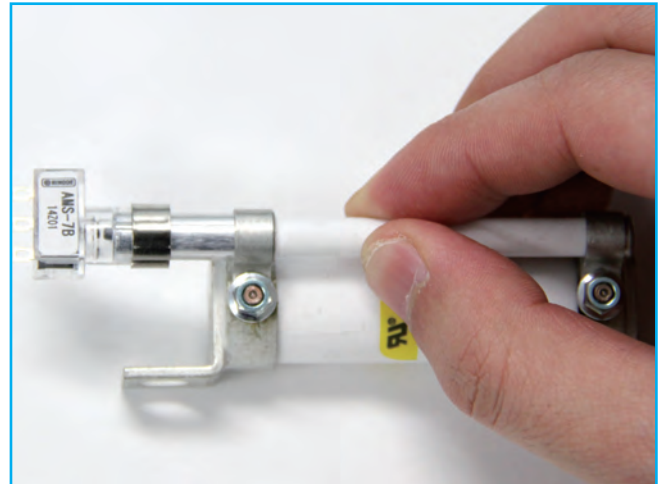
Before using, please read these instructions carefully and use the device in the appropriate manner.

Micro-switch : AMS series

Fuse with an indicator fuse : Products that have "S" after the rated amperage in the product number

1. Hold the indicator fuse firmly and put in the micro-switch

If the micro-switch is installed without holding the indicator fuse, this may cause the indicator band to bend and/or come out of the indicator fuse easily.



Hold the indicator fuse with your fingers firmly.

2. Twist lightly and install the micro-switch to the prescriptive location

If the micro-switch is installed forcibly and at an irregular angle, this may cause the indicator band to bend and/or come out of the indicator fuse easily.

If it is not installed in the prescribed location, the fusing stick may not be able to reach the switch.

* In order to prevent disconnection, a ring is attached to the connecting part of the micro-switch. Depending on the ring size, a little insertion force may be required.

