

### FEATURES

- 750GHK series is a substrate-mounted fuse, effectively reducing power and space requirements.  
(Suitable for inverter, UPS, power supply use)
- High voltage (AC850 DC750)  
-Same fuse size as 660GHK series-

### RATING

Rated voltage and breaking capacity

UL recognized: 850V AC-10kA, 750V DC-10kA (L/R=2ms)

CCC recognized: 850V AC-50kA, 600V DC-50kA (L/R=10ms)

Minimum breaking current: 850V AC/750V DC-8 times the rated amperage

Maximum arc voltage: 1900V

### Specifications

Ta=25°C

Type	Rated Amperage (A)	Fusing I <sup>2</sup> t (A <sup>2</sup> S)	Shutdown I <sup>2</sup> t (A <sup>2</sup> S) at AC850V 10kA	Power Loss (W)	Weight (g)
750GHK050ULTC	50	311.5	7100	9.3	34
750GHK080ULTC	80	553.8	9500	18.0	
750GHK100ULTC	100	865.3	12000	21.5	



750GHK

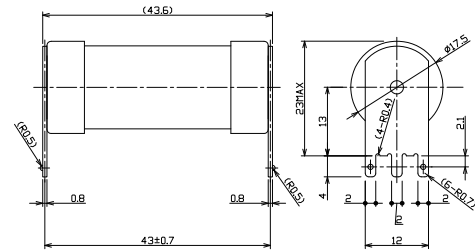


750GHK

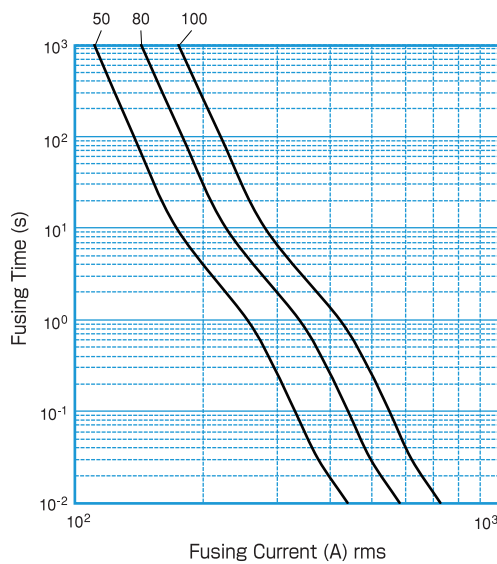
### CAUTION!

- Read "FOR SAFE USE" at the back of this catalog before use.
- Fuse should be used less than 50% of their rated current.
- Arc re-ignition may occur if the fusing current is less than 8 times larger than the fuse.
- The power loss and the temperature characteristics are studied using an FR-4 board (one-side board) and a 35- $\mu$ m-thick copper foil with a copper foil width of 2mm/A depending on the rated amperage (e.g.50mm width for a product rated at 100A).

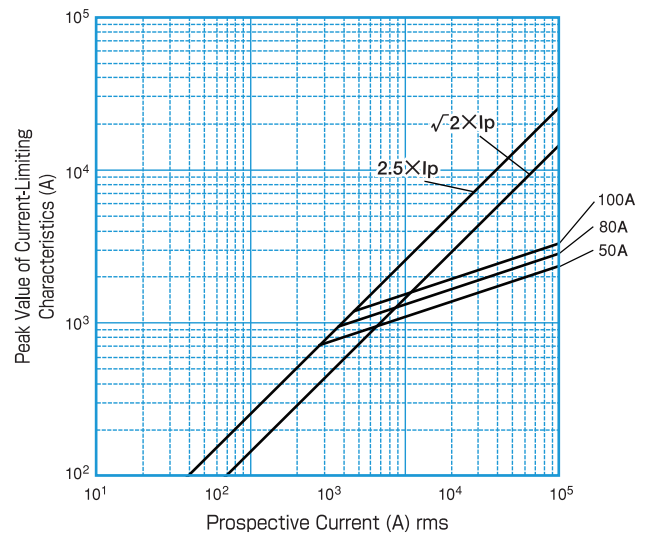
### Dimensions



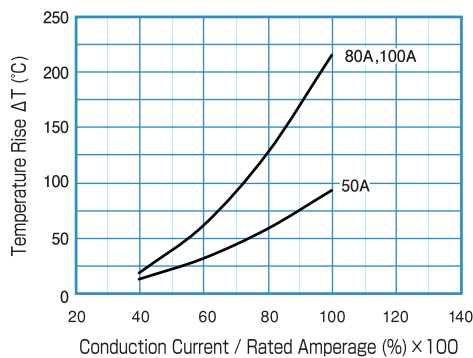
### Fusing Characteristics



### Current-Limiting Characteristics



### Temperature Rise



### Power Loss

